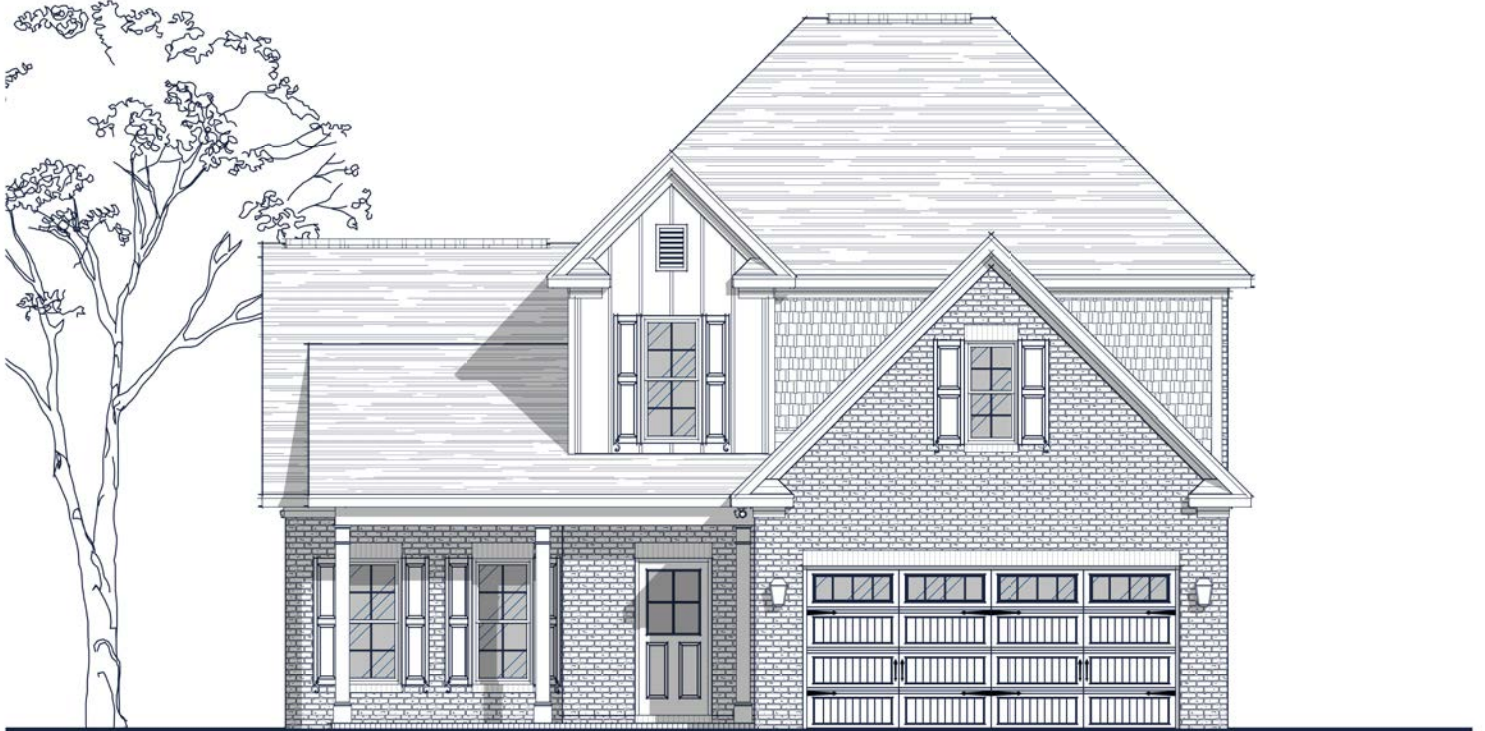


FLOOR PLAN: PRESTON TRADITIONAL



Specs:

Bedrooms:	4
Bathrooms:	3.5
Square Footage:	2,744 Sq.Ft.
First Level:	1,580 Sq. Ft.
Second Level:	1,164 Sq. Ft.
Width:	40' - 10"
Depth:	56' - 0"

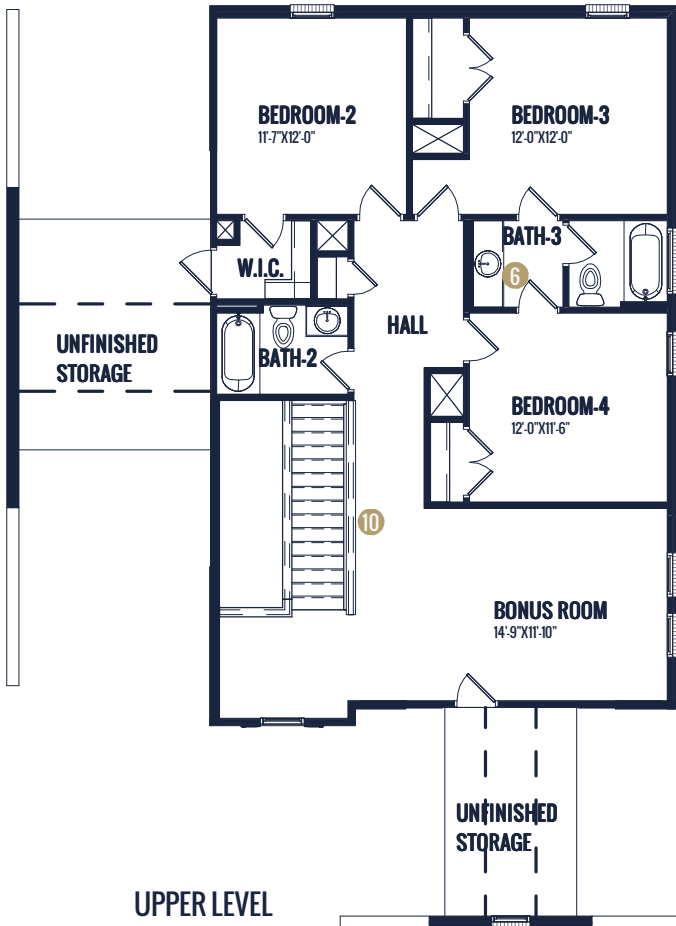
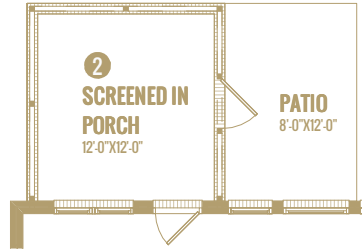
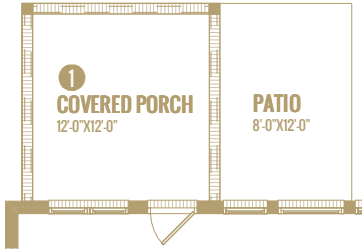
Options Shown:

- | | |
|-----------------------------------|--|
| 1 Covered Porch | 9 French Doors at Flex space |
| 2 Screened in Porch | 10 Open Rails at Stairs |
| 3 Sunroom (Adds 144 Sq.Ft.) | 11 Additional Cabinets at Island |
| 4 3'-0" Wider Garage w/ Two Doors | 12 Enlarged Corner Kitchen Pantry |
| 5 2'-0" Garage Extension | 13 Enlarged Curved Patio |
| 6 Double Sink Bath-3 | 14 Twin Window at Breakfast |
| 7 Built-ins | 15 Pet Room |
| 8 Drop Zone | 16 Hobby Room (Adds 100 Sq.Ft.
w/ Opt. 4) 140 Sq.Ft.
w/ Opt. 5) 115 Sq.Ft.
(Both Opts. 4-5) 161 Sq.Ft.) |

Watercolors, illustrations, and floor plans are for marketing purposes only and are subject to change at builder's discretion. Square footage is outside veneer and should be independently verified. This is not a legal document.

4/9/2024 11:36:00 AM

FLOOR PLAN: PRESTON TRADITIONAL



Watercolors, illustrations, and floor plans are for marketing purposes only and are subject to change at builder's discretion. Square footage is outside veneer and should be independently verified. This is not a legal document.
4/9/2024 11:36:02 AM

FLOOR PLAN: PRESTON TRADITIONAL



DOUBLE SINK



BUILT-INS



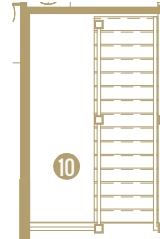
DROP ZONE



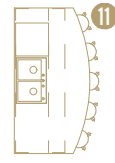
FRENCH DOORS



OPEN-RAILS



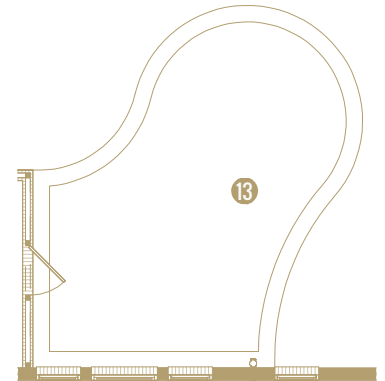
OPEN-RAILS



CABINETS AT ISLAND



CORNER PANTRY



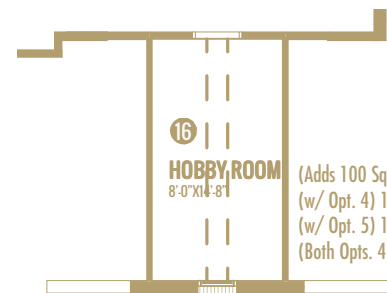
CURVED PATIO



PET ROOM



4 3'-0" WIDER GARAGE W/ TWO DOORS



16
HOBBY ROOM
8'-0" X 14'-8"

(Adds 100 Sq.Ft.
(w/ Opt. 4) 140 Sq.Ft.
(w/ Opt. 5) 115 Sq.Ft.
(Both Opts. 4-5) 161 Sq.Ft.)

HOBBY ROOM

Watercolors, illustrations, and floor plans are for marketing purposes only and are subject to change at builder's discretion. Square footage is outside veneer and should be independently verified. This is not a legal document.

4/9/2024 11:36:08 AM