



CRAFTSMAN
(STANDARD)
EXTERIOR DESIGN
~2,125 SQUARE FEET



FARMHOUSE
(STANDARD)
EXTERIOR DESIGN
~2,125 SQUARE FEET



CRAFTSMAN
(OPT. REC ROOM AND BEDROOM 5/6)
EXTERIOR DESIGN
~3,194 SQUARE FEET



FARMHOUSE
(OPT. REC ROOM AND BEDROOM 5/6)
EXTERIOR DESIGN
~3,194 SQUARE FEET



ENGLISH
(STANDARD)
EXTERIOR DESIGN
~2,125 SQUARE FEET



TRADITIONAL
(STANDARD)
EXTERIOR DESIGN
~2,125 SQUARE FEET



ENGLISH
(OPT. REC ROOM AND BEDROOM 5/6)
EXTERIOR DESIGN
~3,194 SQUARE FEET



TRADITIONAL
(OPT. REC ROOM AND BEDROOM 5/6)
EXTERIOR DESIGN
~3,194 SQUARE FEET

THE GASTON

Classic Collection

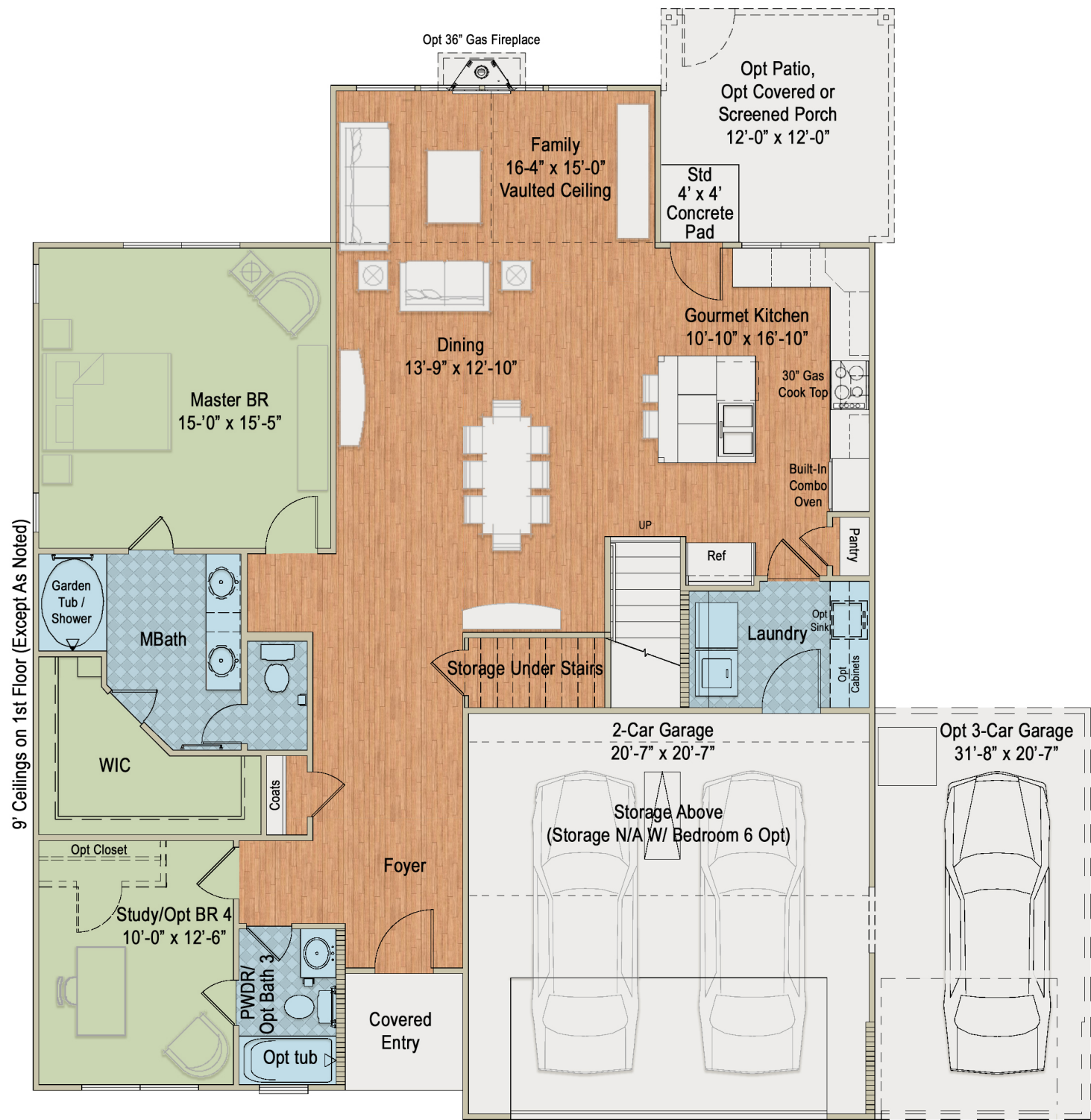


FARMHOUSE
(OPT. REC ROOM AND BEDROOM 5/6)
EXTERIOR DESIGN
BASE VERSION: ~2,125 TO 3,194 SQ FT (3,194 SQ FT AS SHOWN)
Additional exterior designs are available. See back panel for more information

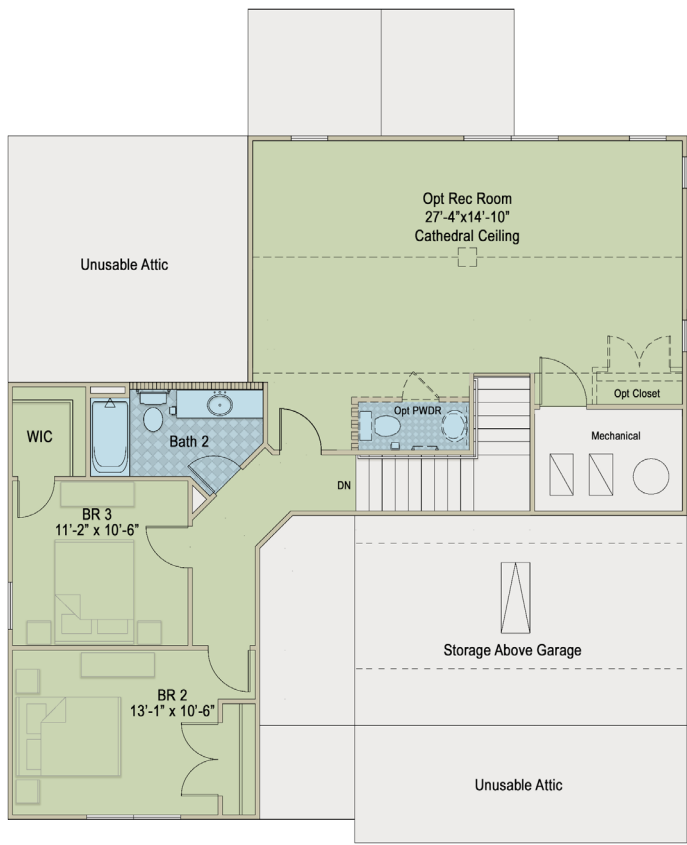


AUTUMNWOOD

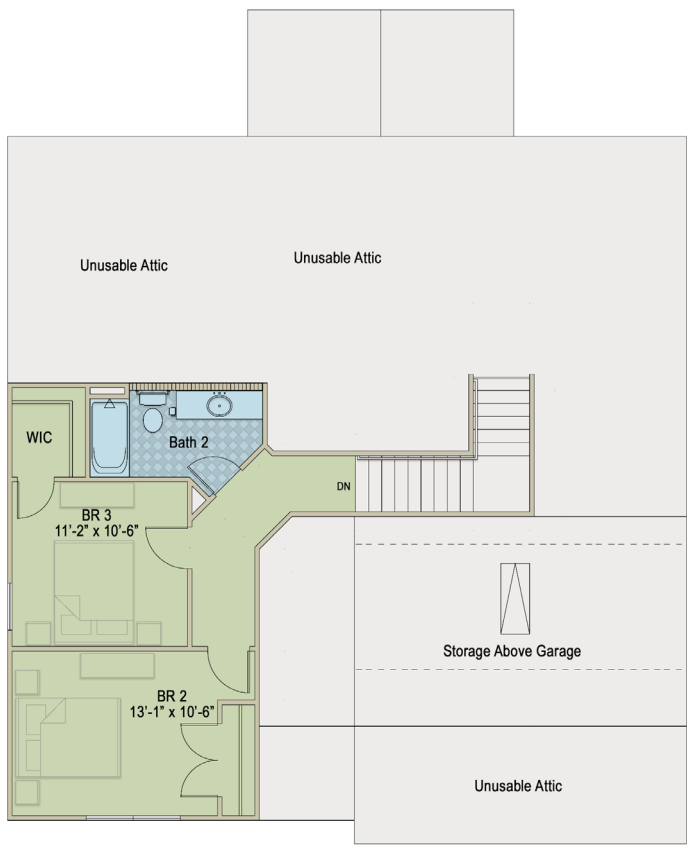
For more information
call 919-249-7008 or visit
[Autumnwood.com](https://www.Autumnwood.com).



FIRST FLOOR

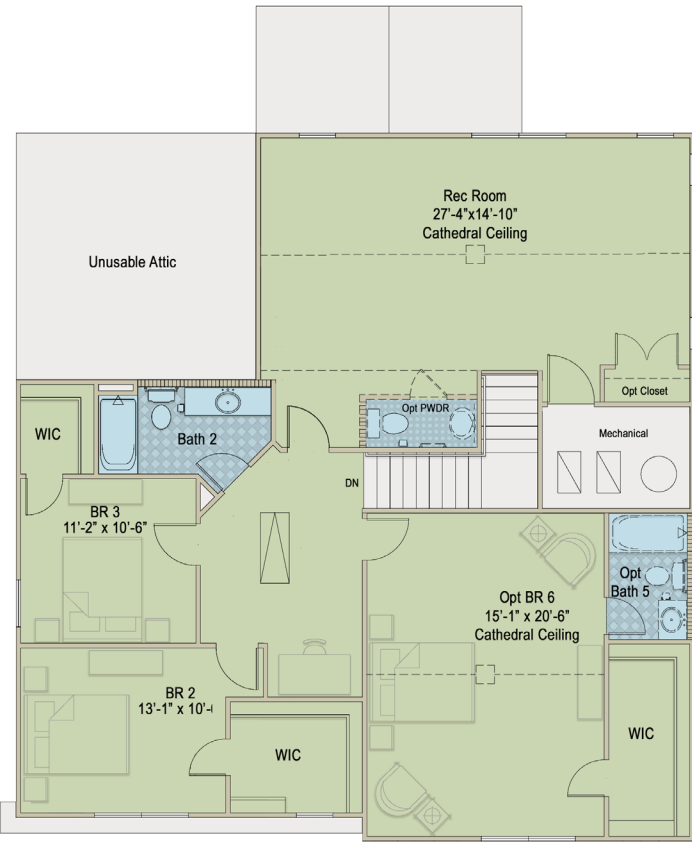


W/ OPTIONAL REC ROOM
~2,634 SQUARE FEET

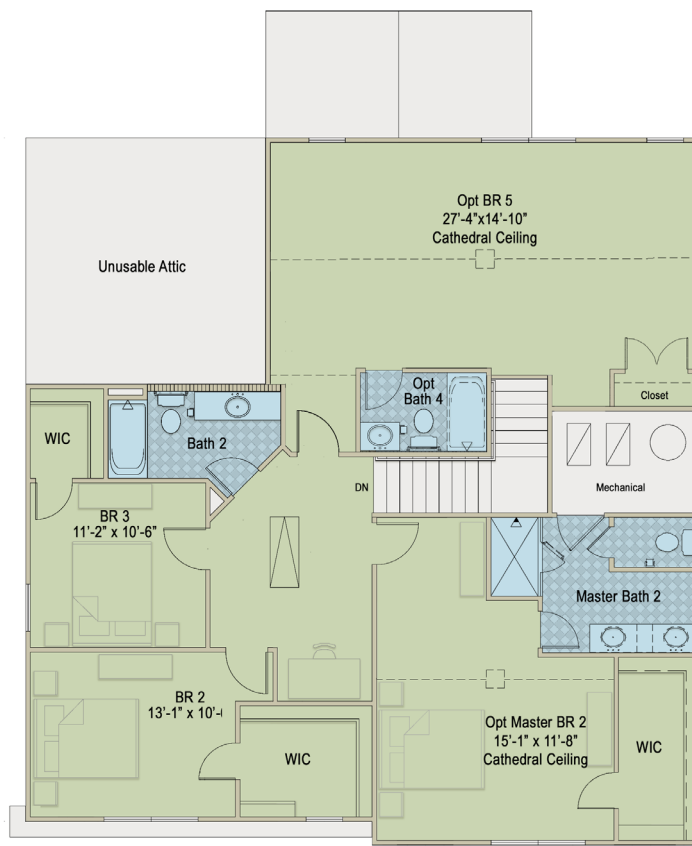


W/ BASE SECOND FLOOR
~2,125 SQUARE FEET

SECOND FLOOR OPTIONS



W/ OPTIONAL REC ROOM OR BEDROOM #5 & OPT BEDROOM 6
~3,194 SQUARE FEET



W/ OPTIONAL REC ROOM OR BEDROOM #5 & MASTER BEDROOM 2
~3,194 SQUARE FEET