

Henley Ridge

NORTH DAVIDSON, NC



COLDWELL BANKER
ADVANTAGE

MH
CHERYL MOONEY | STACY HILL
Two Realtors®. Exceptional Service.

ABOUT CG2 HOMES



Founded on the principals of honesty and integrity, CG2 Homes, strives to ensure that we are providing our customers with a quality product and are proud to tell their friends who built their home. As a small local builder, we understand that it is important to take care of our constituents. Having begun as a fully custom builder, CG2 has taken design concepts, coupled that with custom home materials and workmanship, and has made them more affordable. With standard zero entry tile showers with frameless glass in the master shower, low cost quartz countertop options, and options to add shiplap, wainscoting, or a floating mantle with built ins, CG2 Homes offers customers an opportunity to have a home built by a former “Builder of the Year”, “Best in Show” in the Parade of Homes winner, and local community member that realizes the importance of quality. With over 25 years of experience in the construction business, our President, Tim Grein, emphasizes customer satisfaction and separates CG2 Homes from larger national builders through high quality construction, customer service, and a personal connection with your builder. We hope you will enjoy the CG2 Homes product and The Mill at Stone Creek. We are VERY proud of it!



DEVELOPMENT DESCRIPTION

Henley Ridge, offering 21 home sites situated on oversized lots in highly-desirable northern Davidson County and is less than 20 minutes to downtown Winston Salem.

Henley Ridge is conveniently located to local eateries, shopping and more.

CG2 Homes, Inc. offers today's design trends with large flexible spaces, featuring open-concept living and finished bonus rooms.

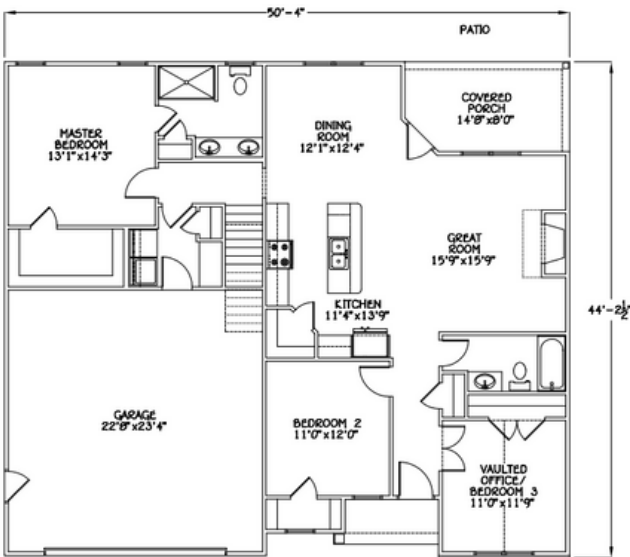
CG2 Homes, Inc. is proud to announce two new floorplans coming soon to Henley Ridge:
The Leyland & Kensley!

STANDARD FEATURES

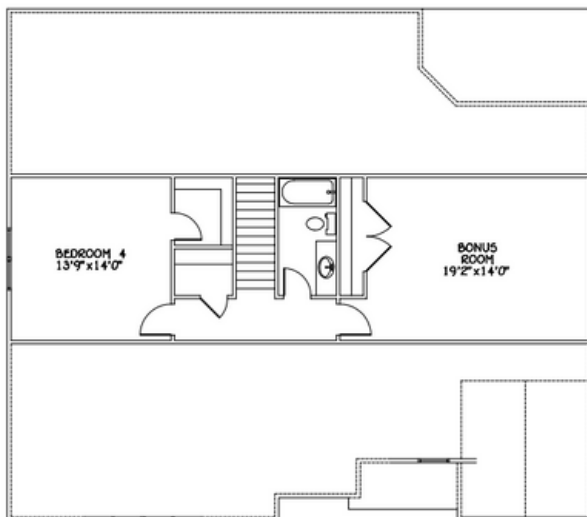
- Covered porches offered on the Harrison and Halifax
- Optional covered porches are available on the Constance, Leyland, Kensley & Aberdeen
- 30 year architectural shingles
- 9' Ceilings downstairs and 8' upstairs
- Gas fireplace
- Tankless hot water heater
- Custom cabinets
- Granite countertops
- Tile backsplash in kitchen
- Stainless steel appliance package
- Detailed crown molding on the main level
- Flooring options include LVP, tile, and carpet
- Tile flooring in all the wet areas
- Carpet in all bedrooms and bonus rooms
- Tub shower units in all guest baths
- Wire shelving in closets
- Carriage house garage door with openers

OPTIONAL UPGRADES

- Exterior stone options
- Covered rear porches on the Aberdeen, Constance and Margate
- Screen porch
- Quartz countertops
- Gas range
- Upgraded LVP
- Hardwood in lieu of LVP
- LVP or hardwood in lieu of carpet (anywhere)
- Upgraded tile options
- Black or brushed nickel plumbing fixtures
- Laundry cabinets
- Wainscotting
- Additional concrete patio or parking pad

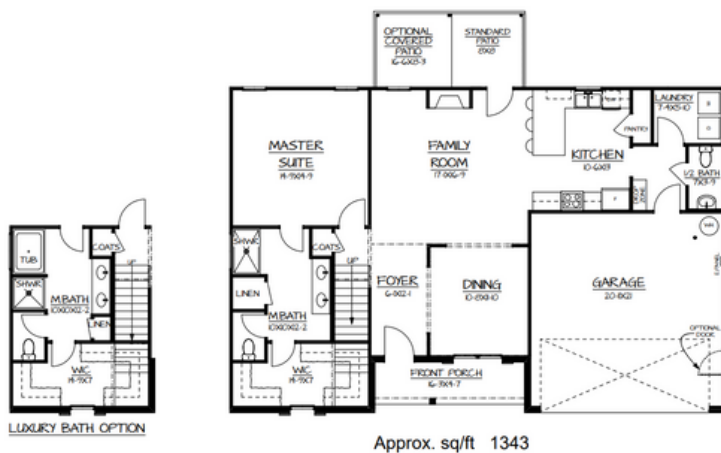
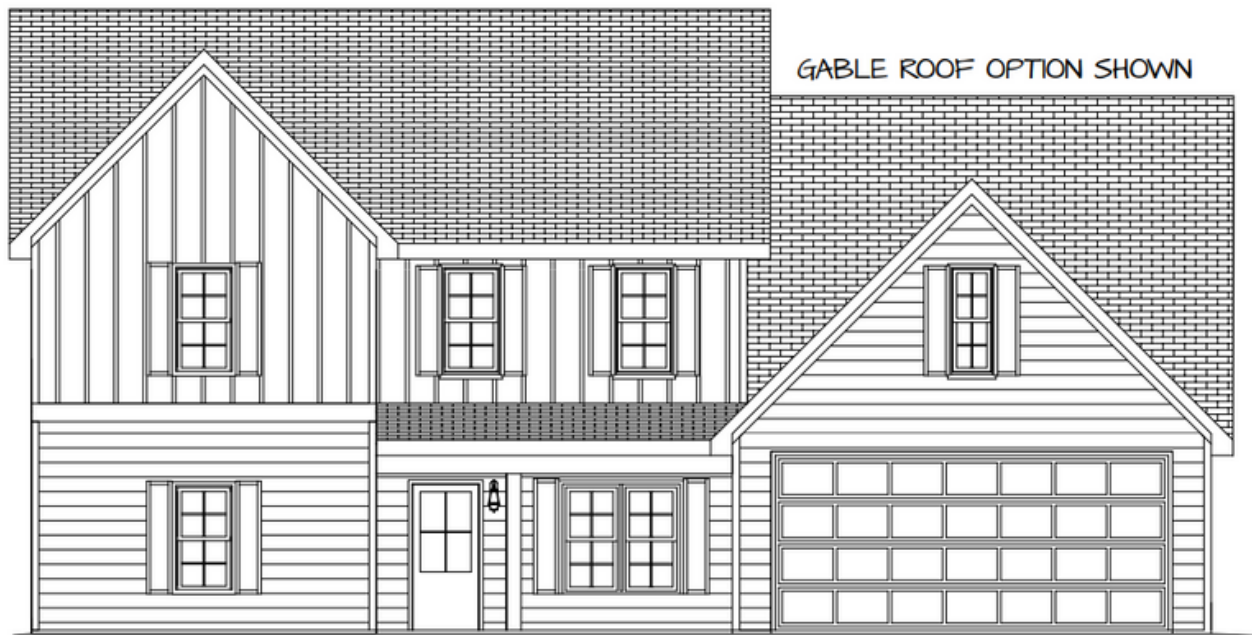


The Harrison

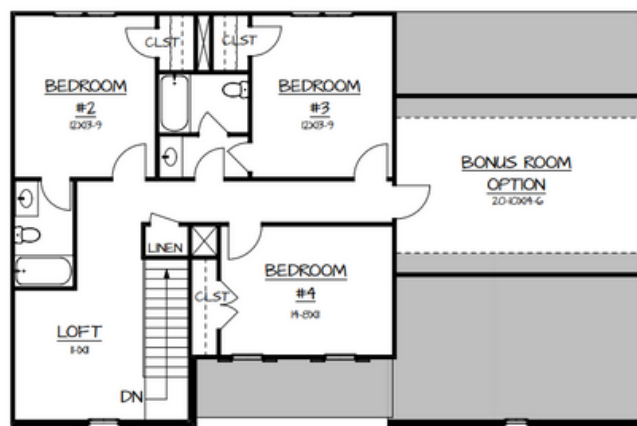


Sq Footage	2,208
Bedrooms	3/4
Bathrooms	3
Garages	2

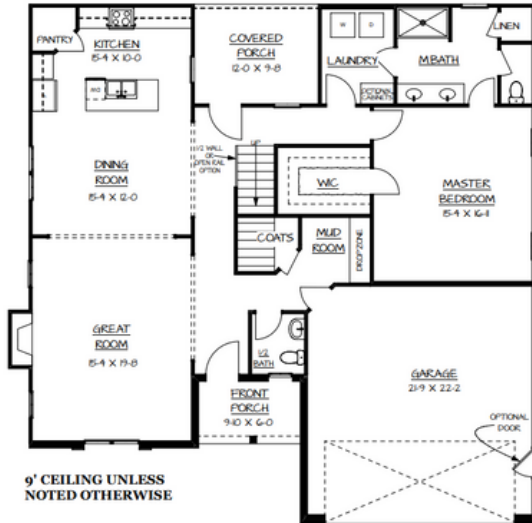
[illegible]



The Aberdeen



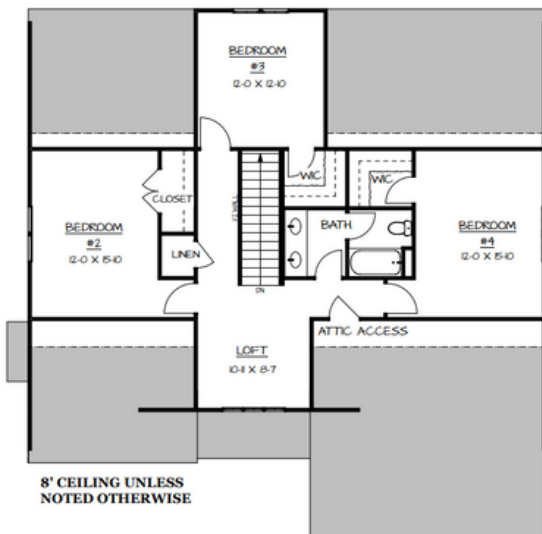
Sq Footage	2,671
Bedrooms	4
Bathrooms	3.1
Garages	2



9' CEILING UNLESS
NOTED OTHERWISE

Approx. sq/ft 1580

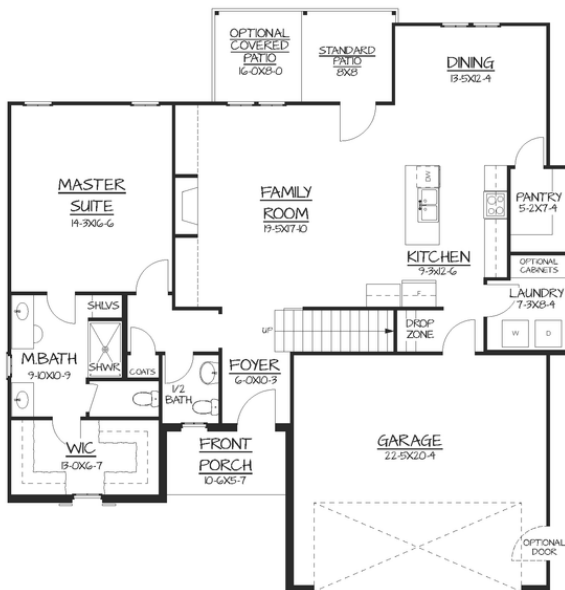
The Halifax



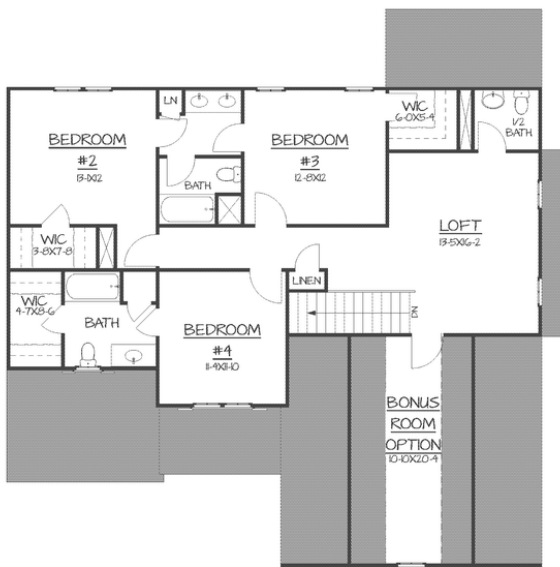
8' CEILING UNLESS
NOTED OTHERWISE

Approx. sq/ft 1021

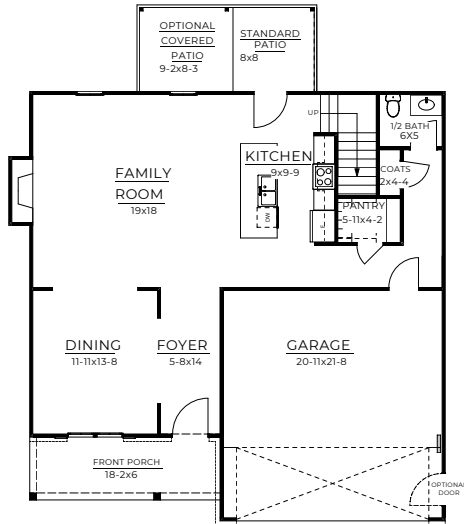
Sq Footage	2,797
Bedrooms	4
Bathrooms	3.1
Garages	2



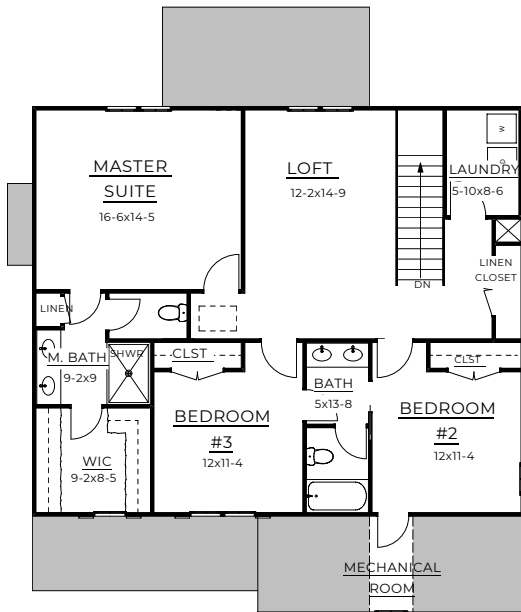
The Margate



Sq Footage	2,797
Bedrooms	4
Bathrooms	3.2
Garages	2

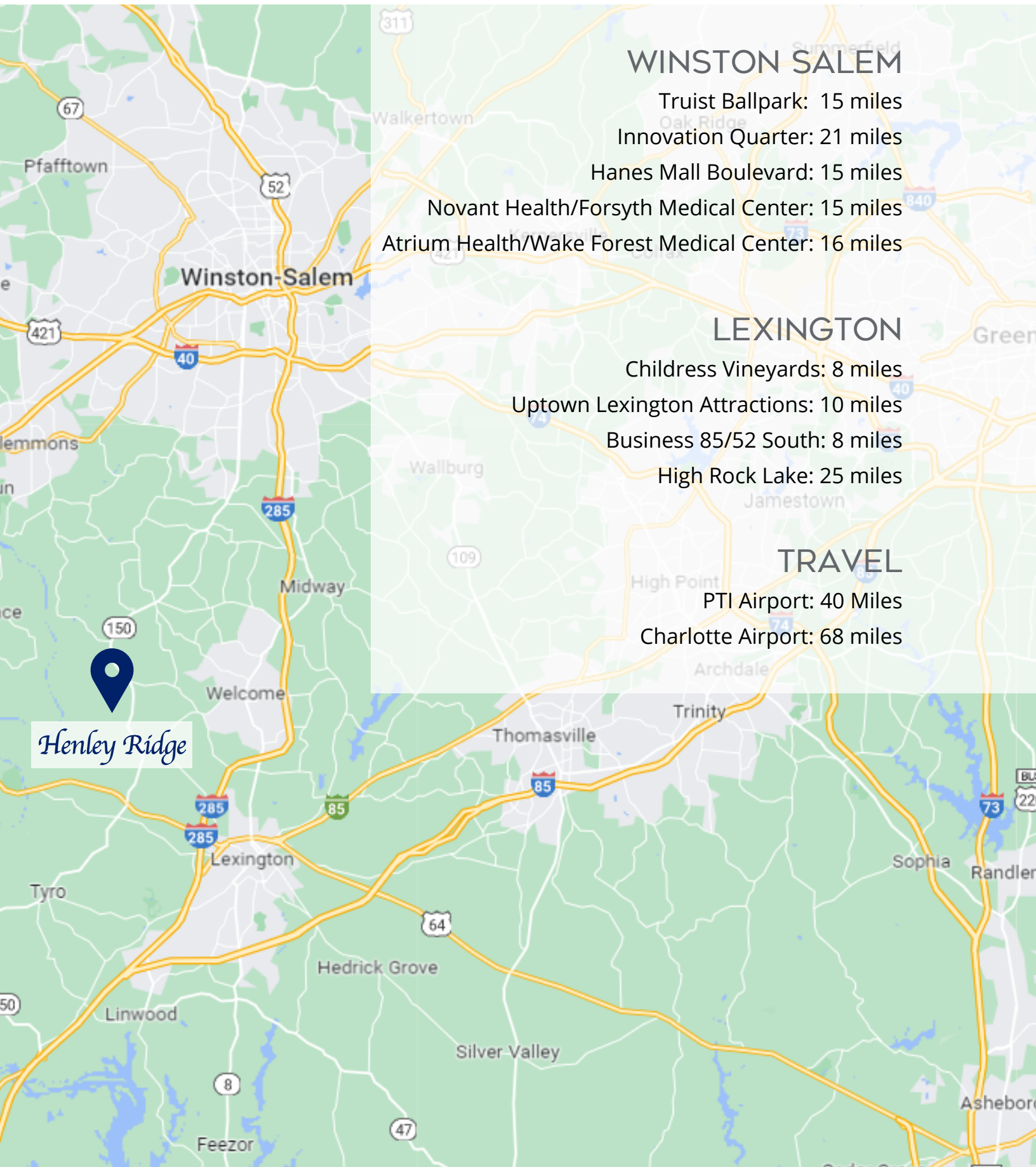


The Leyland



Sq Footage	2,284
Bedrooms	3
Bathrooms	3
Garages	2

HOW CLOSE YOU REALLY ARE



WINSTON SALEM

Truist Ballpark: 15 miles
Innovation Quarter: 21 miles
Hanes Mall Boulevard: 15 miles
Novant Health/Forsyth Medical Center: 15 miles
Atrium Health/Wake Forest Medical Center: 16 miles

LEXINGTON

Childress Vineyards: 8 miles
Uptown Lexington Attractions: 10 miles
Business 85/52 South: 8 miles
High Rock Lake: 25 miles

TRAVEL

PTI Airport: 40 Miles
Charlotte Airport: 68 miles

Henley Ridge



COLDWELL BANKER

ADVANTAGE



CHERYL MOONEY | STACY HILL

Two Realtors®. Exceptional Service.

CONTACT US

285 S. Stratford Road, Winston Salem, NC 27103

336.399.2879 | 336.462.1559

stacyhillrealtor@gmail.com | cheryl.mooney@coldwellbanker.com

stacyhill.cbadvantage.com | cmooney.cbadvantage.com