



### CRAFTSMAN

(STANDARD)

EXTERIOR DESIGN  
~2,125 SQUARE FEET



### CRAFTSMAN

(OPT. REC ROOM OR BEDROOM 5/6)

EXTERIOR DESIGN  
~3,194 SQUARE FEET



### ENGLISH

(STANDARD)

EXTERIOR DESIGN  
~2,125 SQUARE FEET



### ENGLISH

(OPT. REC ROOM OR BEDROOM 5/6)

EXTERIOR DESIGN  
~3,194 SQUARE FEET



### FARMHOUSE

(STANDARD)

EXTERIOR DESIGN  
~2,125 SQUARE FEET



### FARMHOUSE

(OPT. REC ROOM OR BEDROOM 5/6)

EXTERIOR DESIGN  
~3,194 SQUARE FEET



### TRADITIONAL

(STANDARD)

EXTERIOR DESIGN  
~2,125 SQUARE FEET



### TRADITIONAL

(OPT. REC ROOM OR BEDROOM 5/6)

EXTERIOR DESIGN  
~3,194 SQUARE FEET

# THE GASTON

FROM OUR CLASSIC COLLECTION



### FARMHOUSE

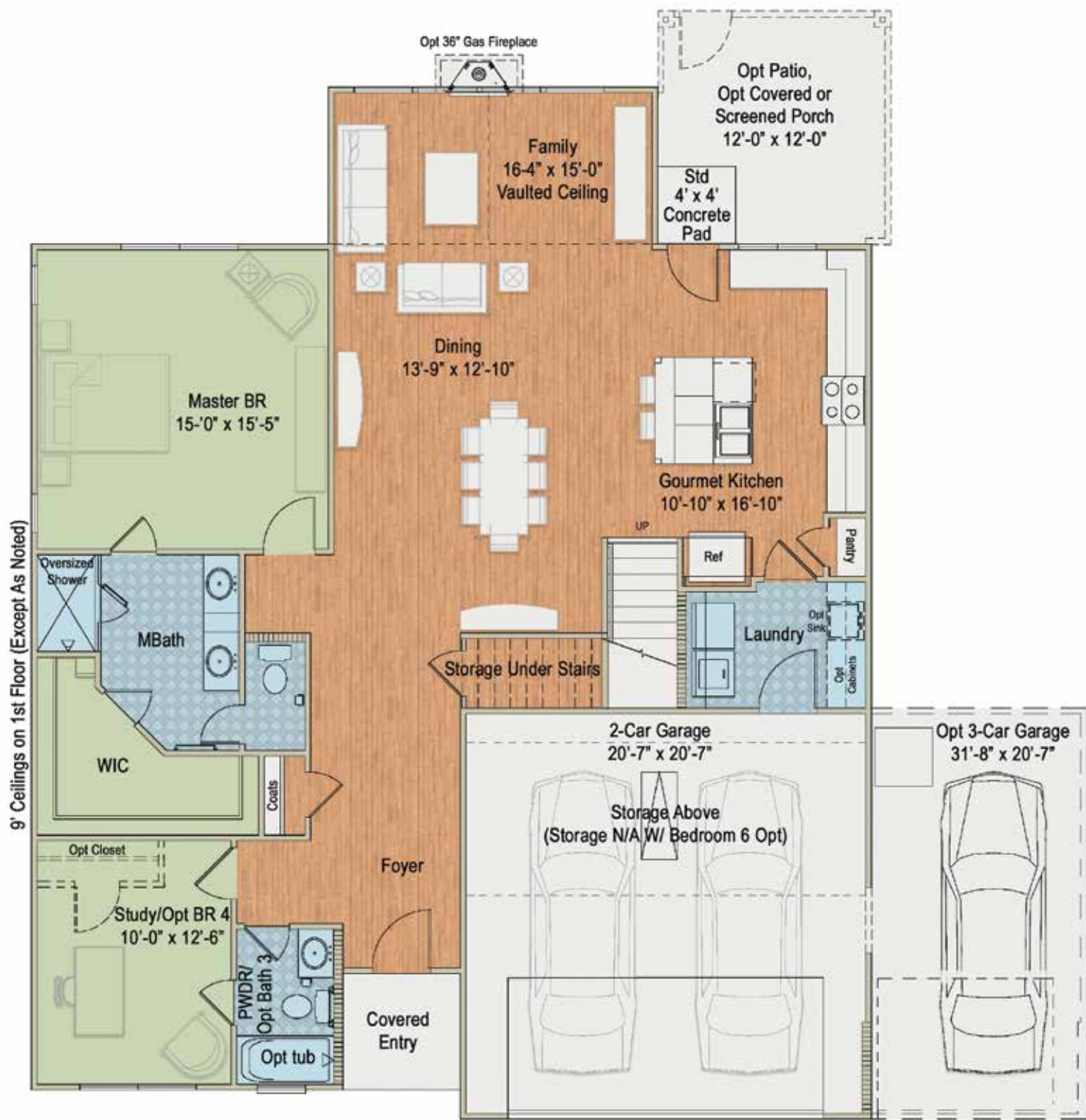
(6TH BEDROOM)

EXTERIOR DESIGN  
~2,634 SQUARE FEET

*Additional exterior designs are available. See back panel for more information*

 For more information call 919-249-7008 or visit [E1Homes.com](http://E1Homes.com).

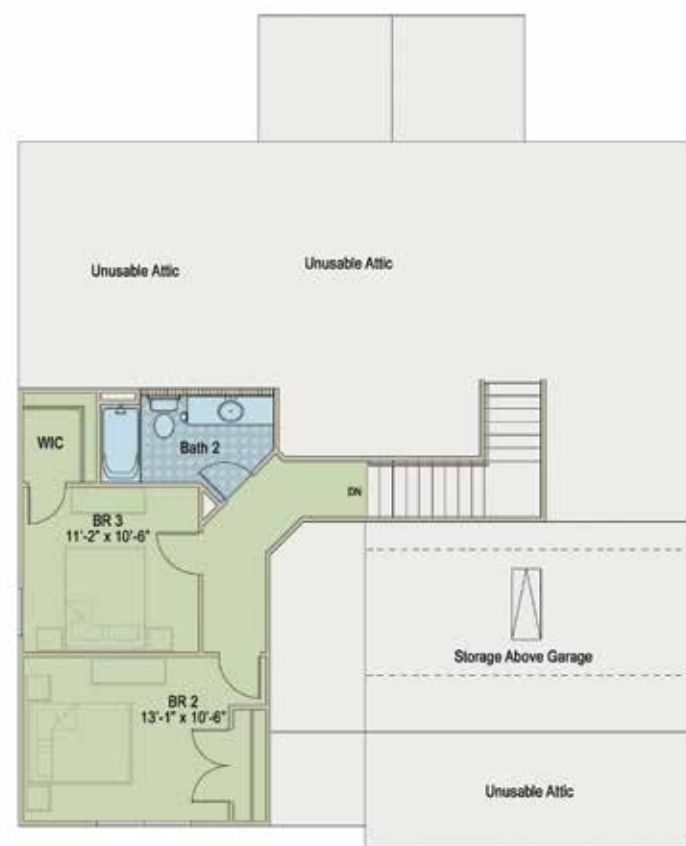




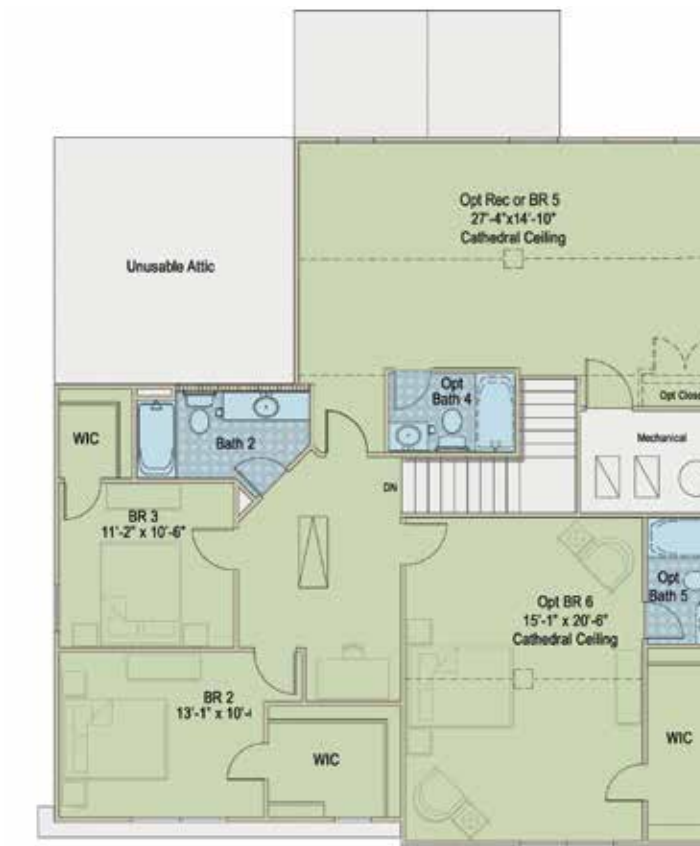
FIRST FLOOR



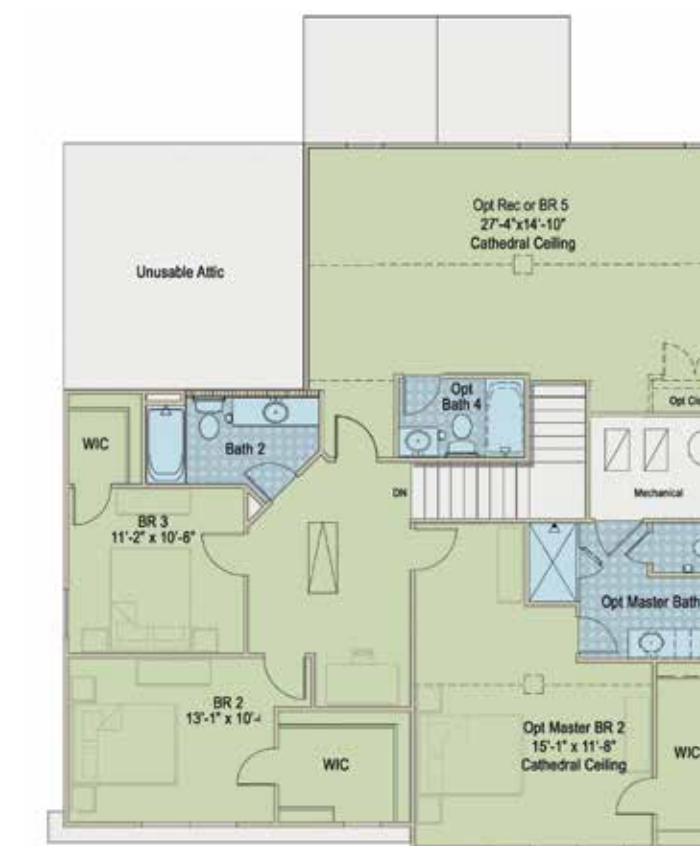
W/ OPTIONAL REC ROOM  
~2,634 SQUARE FEET



W/ BASE SECOND FLOOR  
~2,125 SQUARE FEET



W/ OPTIONAL REC ROOM OR BEDROOM #5 & OPT BEDROOM 6  
~3,194 SQUARE FEET



W/ OPTIONAL REC ROOM OR BEDROOM #5 & MASTER BEDROOM 2  
~3,194 SQUARE FEET  
SECOND FLOOR OPTIONS